



**HIGHEST QUALITY PRODUCER OF
REPTILE RACKS AND TUBS,
DISTRIBUTOR OF TRUSTED PRODUCTS**



- **WRS RACKS**
- **WRS TUBS**
- **BEEDINGS**
- **THERMOSTATS**
- **CLEANERS**
- **HEAT MATS**
- **OTHER ACCESORIES**

WORLDWIDE SHIPPING AVAILABLE

WRS REPTILE TUBS

CHOOSE BETWEEN CLEAR / GRAY, AND WITH CUP / FLAT

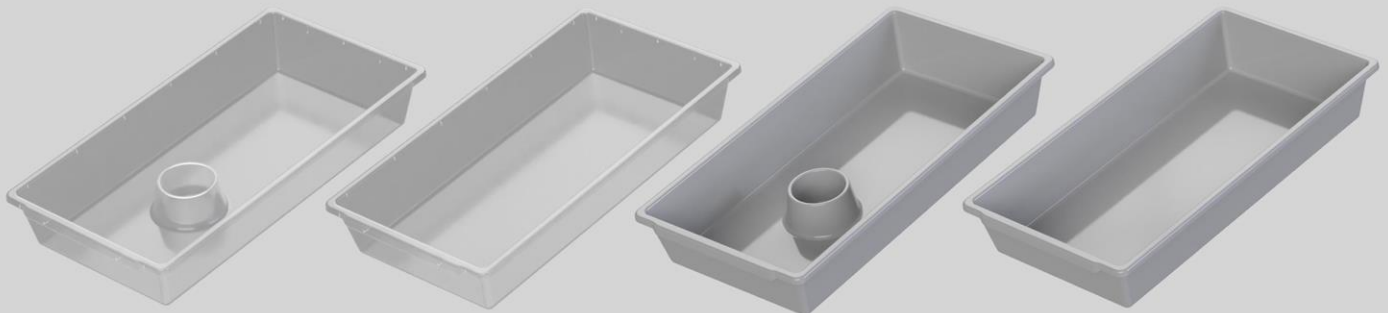
WRS10 550x235x90 [mm]



WRS40 845x330x135 [mm]



WRS70 845x440x135 [mm]



ORDER NOW!

www.WraithRacks.com
kontakt@wraithracks.com



FOLLOW US ON





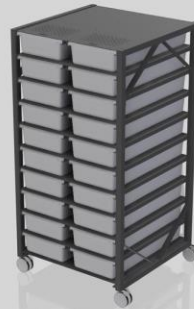
WRS PRO RACKS



WRS10 5L-1R-10T



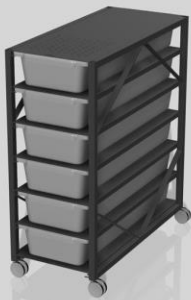
WRS10 5L-2R-20T



WRS10 10L-1R-20T



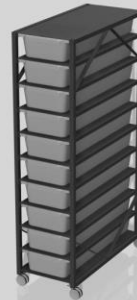
WRS10 15L-1R-30T



WRS40 6L-1R-6T



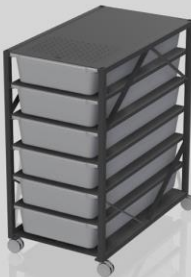
WRS40 6L-2R-12T



WRS40 10L-1R-10T



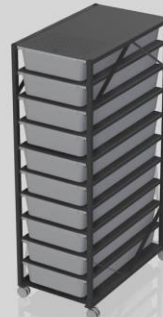
WRS40 10L-2R-20T



WRS70 6L-1R-6T



WRS70 6L-2R-12T



WRS70 10L-1R-10T



WRS70 10L-2R-20T

Why should you choose WRS PRO?

- Full aluminium, powder coated (RAL7024), stable and light construction
- Big heat mats (WRS40 and WRS70) included as standard
- Ventilation included as standard
- Compact and minimalistic design
- Because of no cross beams, you can stack more tubs upwards
- Easy to assemble and disassemble
- Possible custom paint color from RAL palette on special request

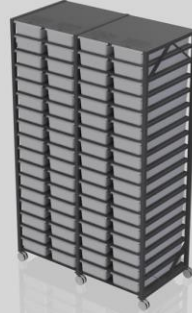
Tubs available in clear/gray and with cup/flat



WRS10 15L-2R-60T



WRS10 17L-1R-34T



WRS10 17L-2R-68T



WRS10 17L-3R-102T



WRS40 12L-1R-12T



WRS40 12L-2R-24T



WRS40 12L-3R-36T



WRS40 12L-4R-48T



WRS70 10L-3R-30T



WRS70 12L-1R-12T



WRS70 12L-2R-24T



WRS70 12L-3R-36T

L - number of levels
R - number of rows
T - number of tubs

For prices, more available options or ongoing promotions
make sure to visit our website:

www.WraithRacks.com
kontakt@wraithracks.com